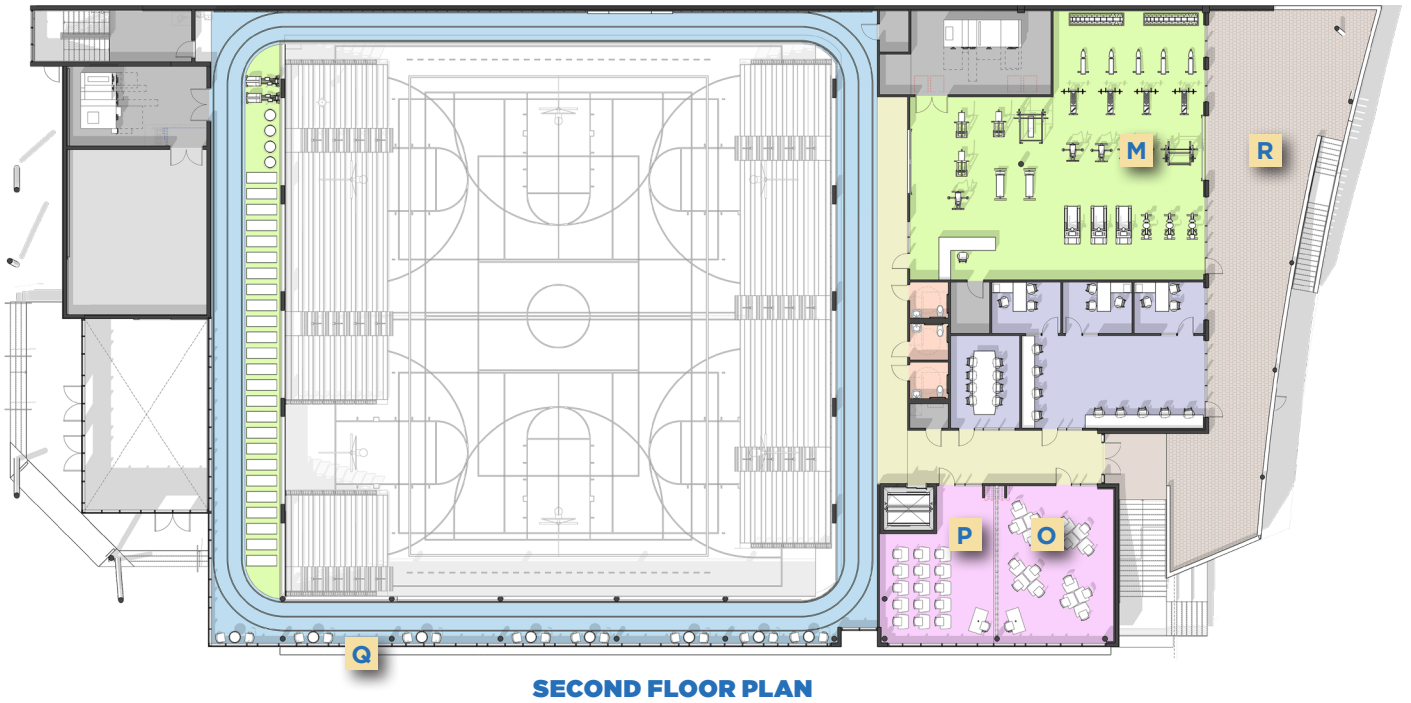
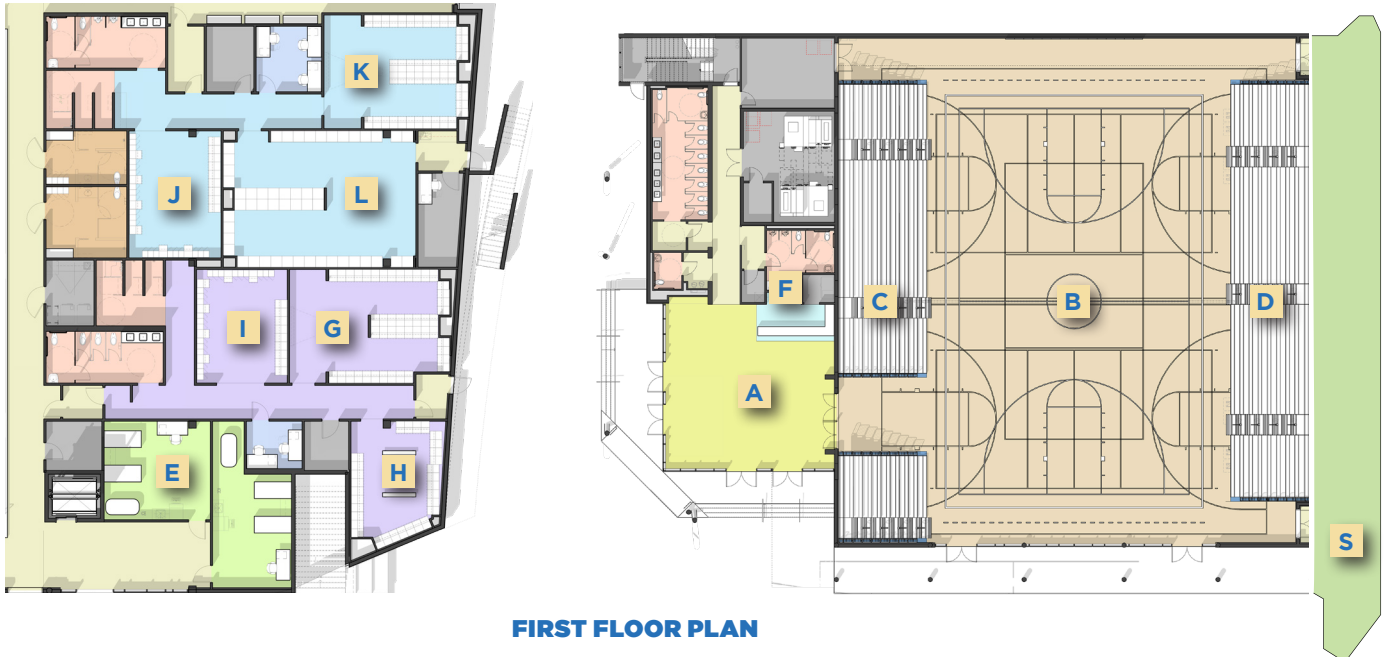




GulliverPrep
UNPARALLELED

PHASE III
UPPER SCHOOL CAMPUS
Updated March 3, 2025

ATHLETIC CENTER - \$10,000,000



NAMING OPPORTUNITIES

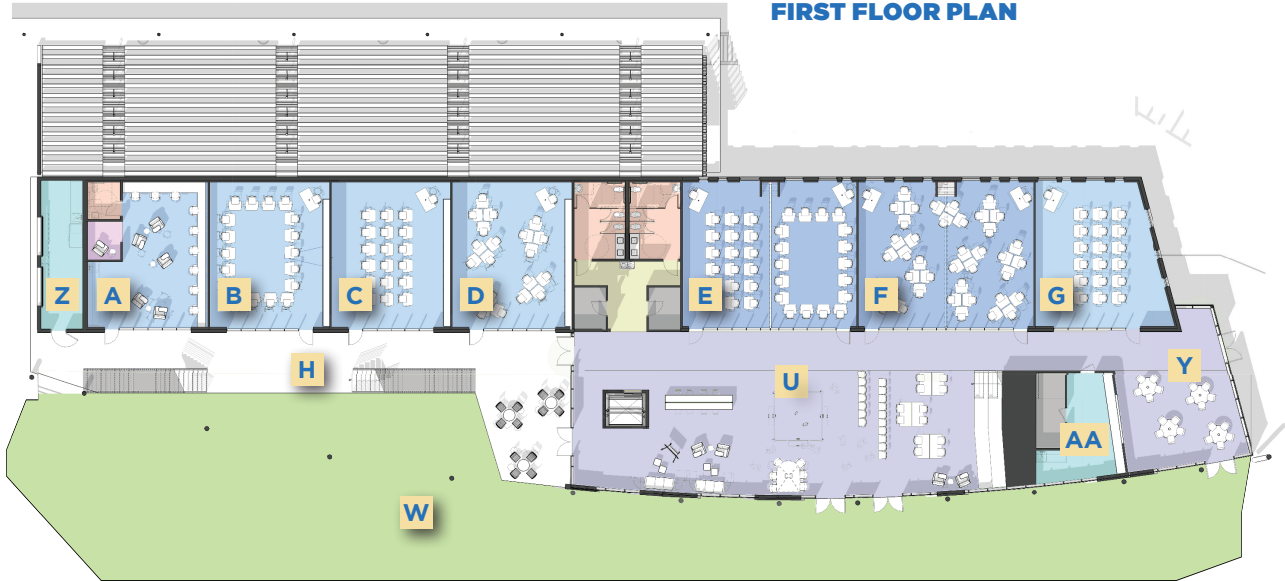
KEY LETTER	LOCATION	VALUE
	Athletic Center (Exterior)	AVAILABLE
A	Lobby	AVAILABLE
B	Gym Court	NAMED
C	Bleachers 1	NAMED
D	Bleachers 2	NAMED
E	Training Room	NAMED
F	Spirit Store	AVAILABLE
G	Girls Varsity Locker Room 1	NAMED
H	Girls Varsity Locker Room 2	AVAILABLE
I	Girls PE Locker Room	AVAILABLE
J	Boys Varsity Locker Room 1	NAMED
K	Boys Varsity Locker Room 2	NAMED
L	Boys PE Locker Room	NAMED
M	Weight Room	NAMED
O	Flex Room 1	AVAILABLE
P	Flex Room 2	AVAILABLE
Q	Indoor Track	NAMED
R	Outdoor Viewing Platform	NAMED
S	Athletic Promenade	AVAILABLE

Named spaces as of March 3, 2025

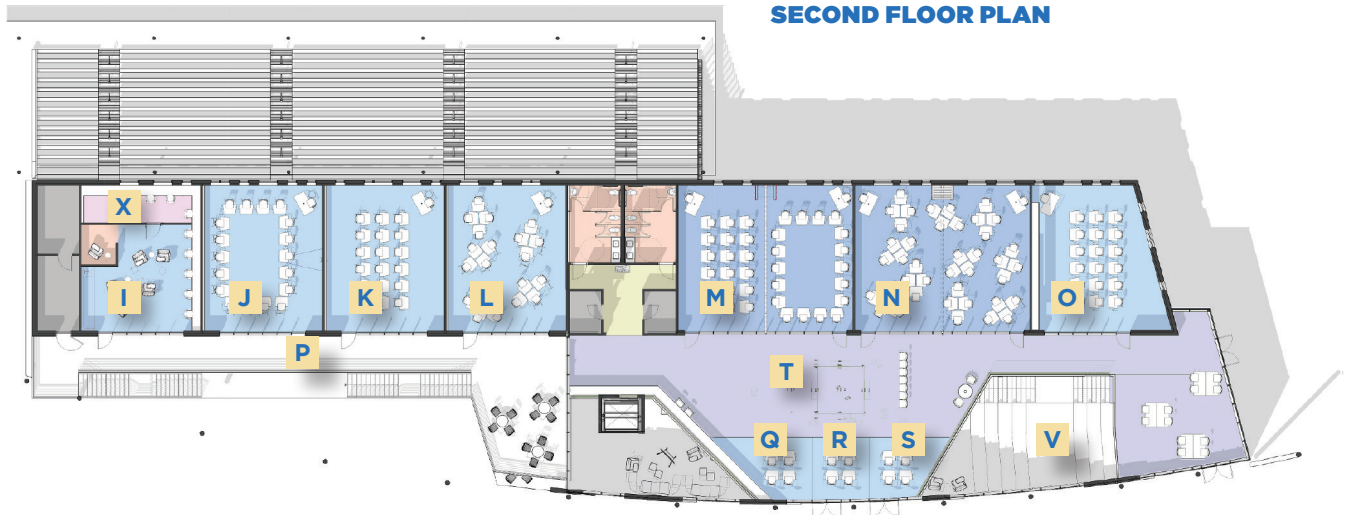
To discuss naming opportunities that are meaningful to you and your family, contact Natalie White at nwhite@gulliverprep.org.

ACADEMIC BUILDING - \$10,000,000

FIRST FLOOR PLAN



SECOND FLOOR PLAN



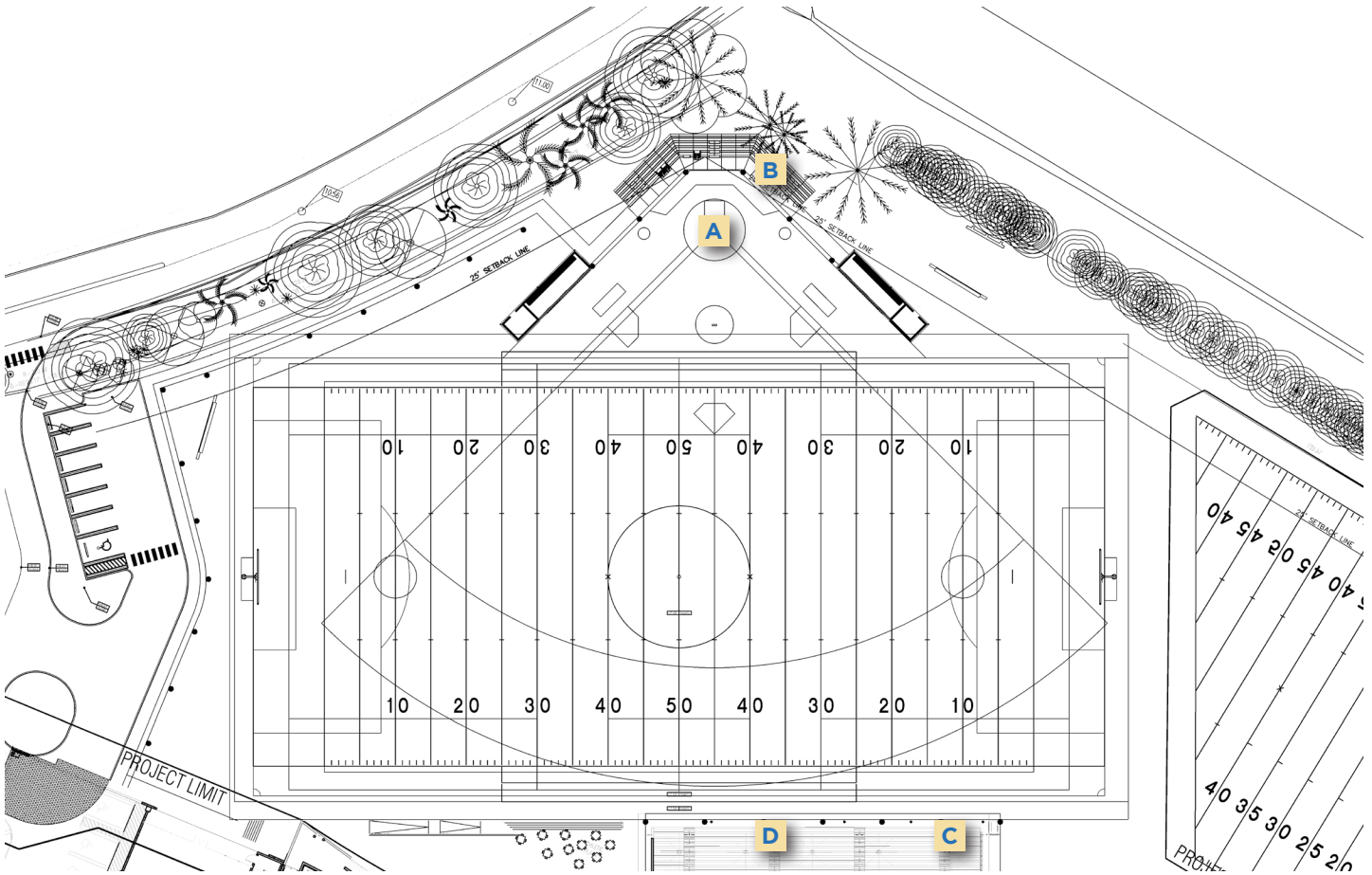
NAMING OPPORTUNITIES

KEY LETTER	LOCATION	VALUE
	Academic Building (Exterior)	AVAILABLE
A	Video & Film Production	AVAILABLE
B	RaiderVision - Control Room	AVAILABLE
C	Broadcasting Classroom	AVAILABLE
D	Journalism & Publications	AVAILABLE
E	Engineering Classroom 1	NAMED
F	Engineering Classroom 2	NAMED
G	Engineering Lab	NAMED
H	Learning Patio	NAMED
I	Teacher Planning	NAMED
J	Business Classroom 1	NAMED
K	Business Classroom 2	AVAILABLE
L	Business Classroom 3	AVAILABLE
M	International Business & Entrepreneurship Classroom 4	NAMED
N	International Diplomacy & Law Classroom	NAMED
O	Architecture Classroom	AVAILABLE
P	Learning Terrace	NAMED
Q	Cloud Space 1	AVAILABLE
R	Cloud Space 2	AVAILABLE
S	Cloud Space 3	AVAILABLE
T	Innovation Hub	NAMED
U	Collaboration Hub	NAMED
V	Indoor Spanish Steps	NAMED
W	Academic Promenade	AVAILABLE
X	Athletics Press Box	AVAILABLE
Y	Academic Patio	NAMED
Z	Concession Stand	AVAILABLE
AA	Raider Cafe	AVAILABLE

Named spaces as of March 3, 2025

To discuss naming opportunities that are meaningful to you and your family, contact Natalie White at nwhite@gulliverprep.org.

ATHLETIC PLAYFIELDS



FIRST FLOOR PLAN

KEY LETTER	LOCATION	VALUE
A	Softball Field	NAMED
B	Softball Bleachers	AVAILABLE
C	Sean Taylor '01 Memorial Field - Bleachers 1	NAMED
D	Sean Taylor '01 Memorial Field - Bleachers 2	AVAILABLE

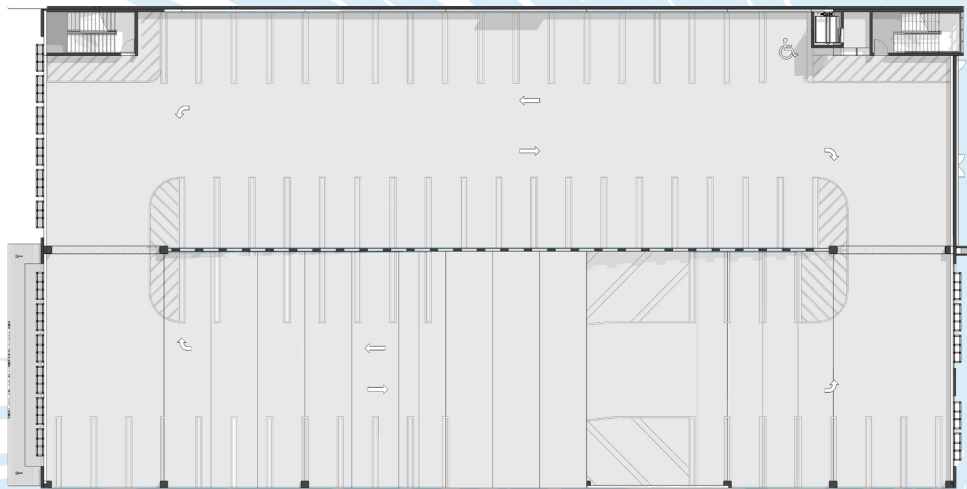
Named spaces as of March 3, 2025

To discuss naming opportunities that are meaningful to you and your family, contact Natalie White at nwhite@gulliverprep.org.

PARKING GARAGE - \$2,500,000



FIRST FLOOR PLAN



SECOND FLOOR PLAN

KEY LETTER	LOCATION	VALUE
	Parking Garage (Exterior)	AVAILABLE
A	Executive Offices	NAMED
N	Athletic Offices	NAMED

Named spaces as of March 3, 2025

To discuss naming opportunities that are meaningful to you and your family, contact Natalie White at nwhite@gulliverprep.org.

Transformation together

2026

A Campaign for Gulliver Prep

Gulliver's campaign will build on our mission and commitment to excellence by providing facilities that position Gulliver as a global leader in independent school education. Our community, in leading this campaign, will play a vital role by ensuring our exceptional students and faculty have access to unparalleled, world-class educational opportunities for generations to come.

GulliverPrep

Find out more at gulliverprep.org